

**ORDINANCE 1722**  
**ADOPTED 10/19/2015**  
**PUBLISHED 10/22/2015**  
**AMENDED BY ORD. 1728**  
**AMENDED BY ORD. 1729**

AN ORDINANCE AMENDING THE ZONING MAP OF THE CITY OF NORWICH ACCOMPANYING THE ZONING ORDINANCE OF THE CITY OF NORWICH BY CHANGING THE ZONING DESIGNATION OF TRACTS OR PARCELS OF LAND WITHIN THE CITY OF NORWICH.

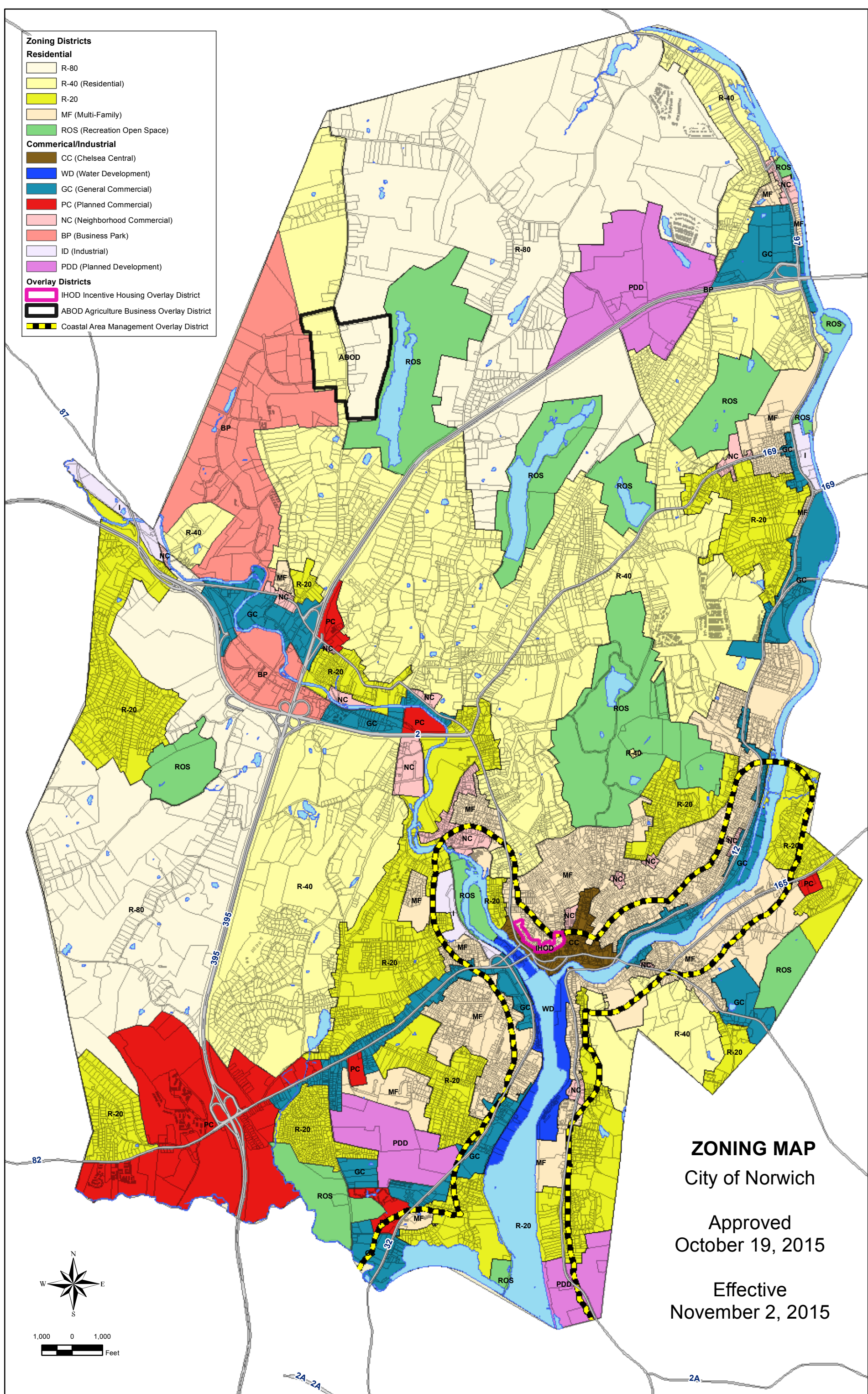
BE IT ORDAINED BY THE COUNCIL OF THE CITY OF NORWICH: that the “Zoning Map of the City of Norwich” is amended as follows:

Copies are available for inspection upon request at the Planning and Neighborhood Services Department, 23 Union Street; the Office of the City Clerk at City Hall, 100 Broadway; as well as on the City of Norwich web site: “[www.norwichct.org](http://www.norwichct.org)” under a search for “Comprehensive Plan Update Project” or by pasting the following address into the browser: “<http://ct-norwich.civicplus.com/index.aspx?nid=678>.”

FURTHERMORE, BE IT ORDAINED BY THE COUNCIL OF THE CITY OF NORWICH THAT this ordinance shall become effective ten days after publication.

**Mayor Debercy Hinchey**

- Zoning Districts**
- Residential**
- R-80
  - R-40 (Residential)
  - R-20
  - MF (Multi-Family)
  - ROS (Recreation Open Space)
- Commerical/Industrial**
- CC (Chelsea Central)
  - WD (Water Development)
  - GC (General Commercial)
  - PC (Planned Commercial)
  - NC (Neighborhood Commercial)
  - BP (Business Park)
  - ID (Industrial)
  - PDD (Planned Development)
- Overlay Districts**
- IHOD Incentive Housing Overlay District
  - ABOD Agriculture Business Overlay District
  - Coastal Area Management Overlay District



**ZONING MAP**  
 City of Norwich

Approved  
 October 19, 2015

Effective  
 November 2, 2015

